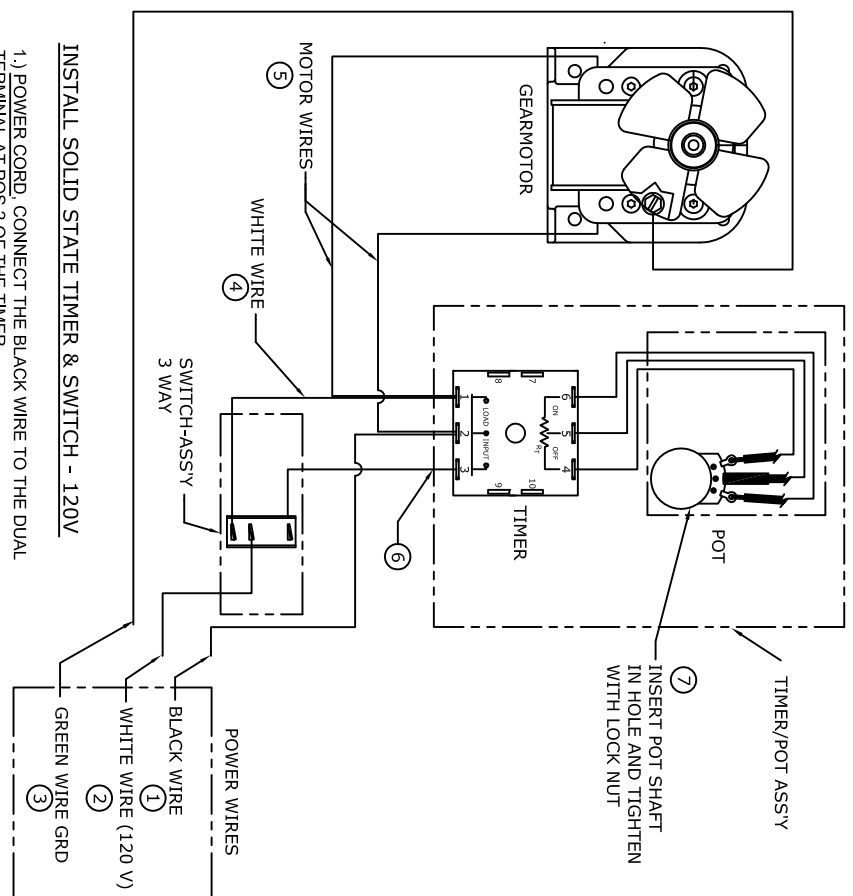
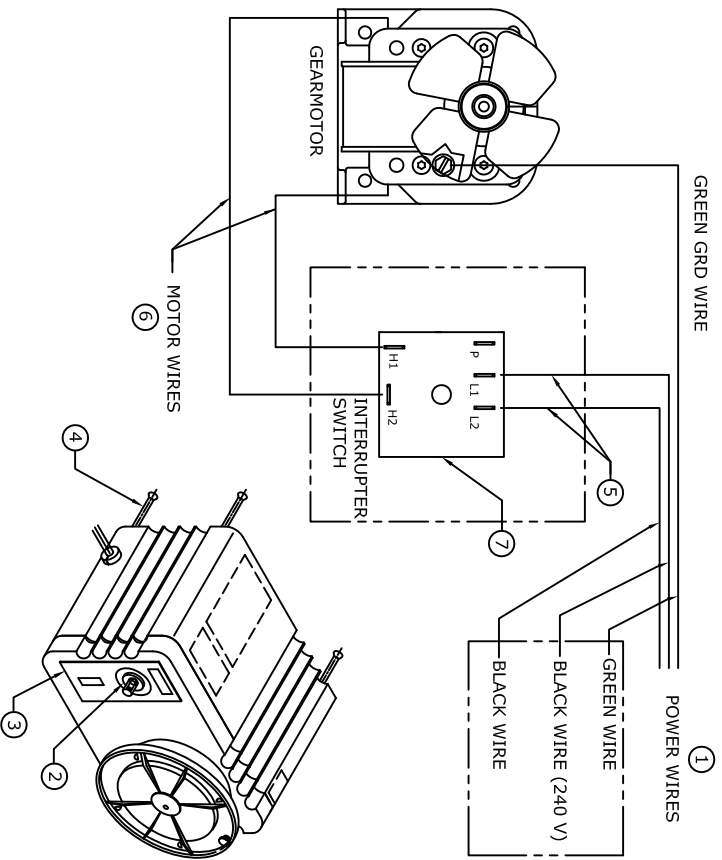


- 1.) DISCONNECT POWER SUPPLY TO UNIT
- 2.) REMOVE CONTROL KNOB BY PRYING WITH A SCREW DRIVER AND LIFT FROM COVER AND REMOVE MOUNTING NUT.
- 3.) REMOVE LABEL FROM COVER AND REPLACE WITH NEW LABEL PROVIDED IN KIT.
- 4.) REMOVE THE 4 SCREWS FROM THE BODY AND COVER.
- 5.) DISCONNECT THE POWER CORD WIRES FROM INTERRUPTER SWITCH TERMINAL L1 AND L2.
- 6.) DISCONNECT MOTOR WIRES FROM INTERRUPTER SWITCH TERMINAL H1 AND H2.
- 7.) REMOVE INTERRUPTER SWITCH FROM COVER.



- 1.) POWER CORD. CONNECT THE BLACK WIRE TO THE DUAL TERMINAL AT POS 2 OF THE TIMER.
- 2.) POWER CORD. CONNECT THE WHITE WIRE TO MIDDLE TERMINAL ON THE 3 WAY SWITCH.
- 3.) POWER CORD. MAKE SURE THE GREEN (GROUND) WIRE IS ATTACHED TO THE MOTOR.
- 4.) CONNECT WHITE WIRE FROM 3 WAY SWITCH TO POS 1 ON TIMER WITH THE PIGGY BACK TERMINAL.
- 5.) CONNECT ONE MOTOR LEAD TO POS 1 ON TIMER, AND ONE MOTOR LEAD TO POS 2 (PIGGY BACK) ON TIMER.
- 6.) CONNECT ORANGE WIRE FROM SWITCH TO POS 3 OF TIMER.
- 7.) INSERT POT SHAFT THROUGH HOLE AND SECURE WITH LOCK NUT AND PLACE TIMER INTO BACK OF COVER. TIGHTEN THE 4 SCREWS TO SECURE COVER ON BODY.

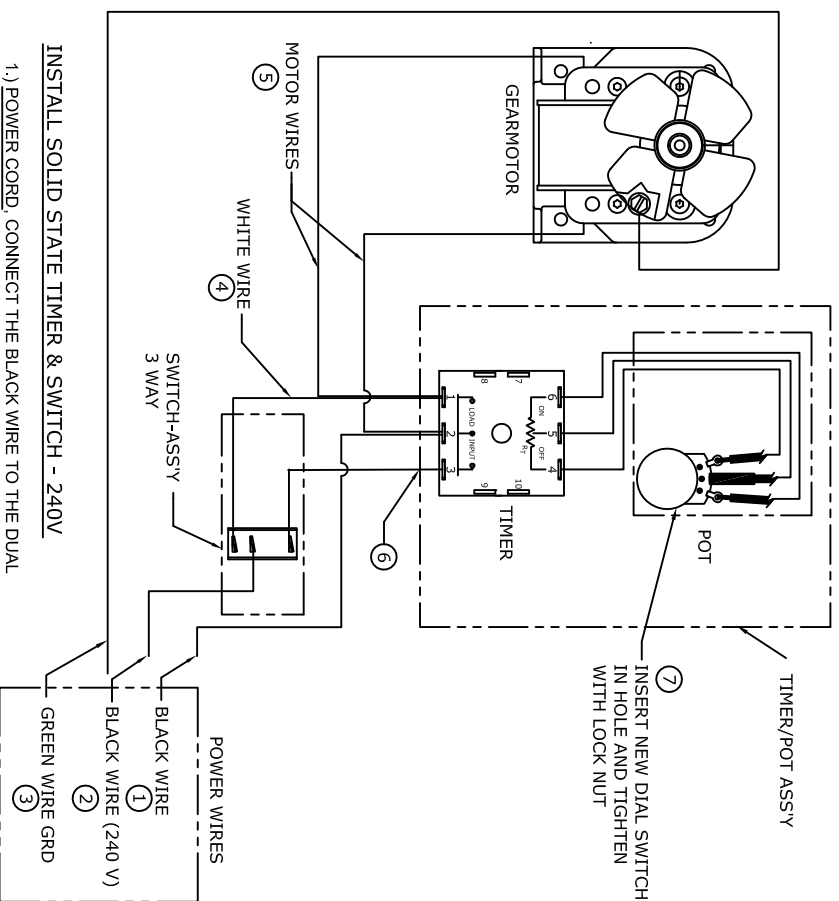
TIMER KIT INSTALLATION - 120V
ITEM 524758



REMOVE INTERRUPTER SWITCH - 240V

- 1.) DISCONNECT POWER SUPPLY TO UNIT
- 2.) REMOVE CONTROL KNOB BY PRYING WITH A SCREW DRIVER AND LIFT FROM COVER AND REMOVE MOUNTING NUT.
- 3.) REMOVE LABEL FROM COVER AND REPLACE WITH NEW LABEL PROVIDED IN KIT.
- 4.) REMOVE THE 4 SCREWS FROM THE BODY AND COVER.
- 5.) DISCONNECT THE POWER CORD WIRES FROM INTERRUPTER SWITCH TERMINAL L1 AND L2.
- 6.) DISCONNECT MOTOR WIRES FROM INTERRUPTER SWITCH TERMINAL H1 AND H2.
- 7.) REMOVE INTERRUPTER SWITCH FROM COVER.

TIMER KIT INSTALLATION -240V
ITEM 524763



INSTALL SOLID STATE TIMER & SWITCH - 240V

- 1.) POWER CORD. CONNECT THE BLACK WIRE TO THE DUAL TERMINAL AT POS 2 OF TIMER.
- 2.) POWER CORD. CONNECT THE BLACK WIRE TO MIDDLE TERMINAL OF 3 WAY SWITCH.
- 3.) POWER CORD. MAKE SURE THE GREEN (GROUND) WIRE IS ATTACHED TO THE MOTOR.
- 4.) CONNECT WHITE WIRE FROM 3 WAY SWITCH TO POS 1 ON THE TIMER WITH THE PIGGY BACK TERMINAL.
- 5.) CONNECT ONE MOTOR LEAD TO POS 1 ON THE TIMER, AND ONE MOTOR LEAD TO POS 2 (PIGGY BACK) ON TIMER.
- 6.) CONNECT ORANGE WIRE FROM SWITCH TO POS 3 OF TIMER.
- 7.) INSERT POT SHAFT THROUGH HOLE AND SECURE WITH LOCK NUT AND PLACE TIMER INTO COVER. TIGHTEN THE 4 SCREWS TO SECURE COVER ON BODY.